



North Central London
Health and Care
Integrated Care System



CAPITAL **nurse**

in North Central London



Student Nurse Graduate Offer

2024-2025



Congratulations on moving to your final year as a student nurse; you are now getting close to completing your undergraduate or postgraduate programme. As a new registrant graduate, we want you to really enjoy your first nursing post and we understand how important the move from student to staff nurse is. We are focused entirely on your nursing career and we want your recruitment experience into our trusts to be a smooth and enjoyable journey.

We very much hope you will choose to stay and work with us for the first step in your NHS nursing career. You will not be disappointed – as last year's graduate nurses will testify! If you have any questions, then please contact your programme lead.

Graduate Offer

Here's our 4-step offer to you:

- ✓ A guarantee of an interview following submission of a fully completed application form
- ✓ No assessment other than a short values-based interview. The values either being those of the Trust you are applying for or those of the NHS
- ✓ We will let you know the outcome of your interview within five working days
- ✓ You will be supported by a 6-12 month CapitalNurse Preceptorship programme in any Trust you choose

All North Central London trusts are part of the CapitalNurse scheme and under this are able to give early offers of employment to you for Band 5 nurse posts for when you qualify.

North Central London Employers

- Great Ormond Street Hospital for Children NHS Foundation Trust
- Moorfields Eye Hospital NHS Foundation Trust
- North London NHS Foundation Trust
- North Middlesex University Hospital NHS Trust and North Middlesex in the Community
- Royal Free London NHS Foundation Trust
- Royal National Orthopaedic Hospital NHS Trust
- University College London Hospitals NHS Foundation Trust
- The Tavistock and Portman NHS Foundation Trust
- Whittington Health NHS Trust

Whether you are thinking about starting out in our community, primary care, our hospital services or perhaps a combination of these, we are confident that we can find the right role for you to get your career off to an exciting start.

Primary & Social Care Opportunities



If you are interested in working in General Practice Nursing, nursing homes or caring for people in their homes, we will be pleased to help and advise you but cannot guarantee you an offer of a job. GPs and Care Homes provide services to the NHS but as independent employers. The growing opportunities in these areas of nursing are suitable for highly motivated newly qualified nurses who see themselves making their nursing career caring for patients outside the hospital setting.

For Care Home Nursing: www.proudtocarenorthlondon.org.uk
For General Practice Nursing: www.ncltraininghub.org/roles/nursing



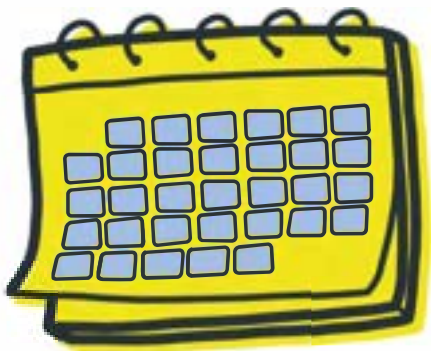
CapitalNurse Preceptorship

We understand that you need to build your skills and confidence as a new graduate nurse and supporting you matters to us. You will be fully supported by a CapitalNurse Quality accredited Preceptorship programme.



Our offer for your preceptorship includes:

- A standard high-quality preceptorship programme which meets the CapitalNurse Framework
- A named preceptor allocated to you
- A personal career clinic professional development session
- Transfer Scheme open to you to gain exciting work opportunities
- A personalised learning needs analysis, using the CapitalNurse Career Framework
- The opportunity to complete your IV Therapy Passport for adult and children's nurses joining secondary care settings
- Shadowing opportunities across our health and care employers



Recruitment Opportunities

Recruitment activity

All available graduate nurse posts in North Central London health & care employers (NHS trusts) will be advertised during the first quarter of the New Year. These posts are available to students who have undertaken their clinical placements and learning opportunities within our health & care employers (trusts). Employers may also advertise at other times throughout the year.

After your application

After a successful application you would be invited to a values-based interview by the employers you have applied to. These interviews are a great opportunity for you to explore the post and to feel that it, and the trust, is the 'right' fit for you. The trust will confirm if it wants, and is able to, offer you a staff nurse role. All your questions matter and will be taken seriously, as we want to make sure you have all the information you need to make the right choice at the start of your career. It is worth thinking about the sorts of questions you may be asked and the answers you would give. Your Universities and/or your local trust Placement Manager or student education team will advertise sessions about applying for your first nursing job. You will find these really informative, so do ask about them and go along.

We will give you the outcome of your interview within five working days. Factual references and pre-employment checks will be followed up and completed by us. Then you will be given your unconditional offer and know you have secured that all important first post as a registered CapitalNurse, with your chosen employer.

We look forward to seeing you in North Central London in your first Staff Nurse role as a CapitalNurse.

Next is a list of our trusts and links to their recruitment pages.



Great Ormond Street Hospital for Children NHS Foundation Trust

www.gosh.nhs.uk/working-here/working-us/current-jobs/#!/job_list/s1/Nursing_Midwifery?_ts=1

Moorfields Eye Hospital NHS Foundation Trust

www.moorfields.nhs.uk/work-for-us

North London NHS Foundation Trust

North Middlesex University Hospital NHS Trust

www.northmid.nhs.uk/current-vacancies

Royal Free London NHS Foundation Trust

www.royalfree.nhs.uk/working-here/our-current-vacancies

Royal National Orthopaedic Hospital NHS Trust

jobs.rnoh.nhs.uk/

University College London Hospitals NHS Foundation Trust

www.uclh.nhs.uk/work-with-us/about-nursing-and-midwifery

Whittington Health NHS Trust

www.whittington.nhs.uk/default.asp?c=23377#!/job_list/s1/Nursing_Midwifery?_ts=1