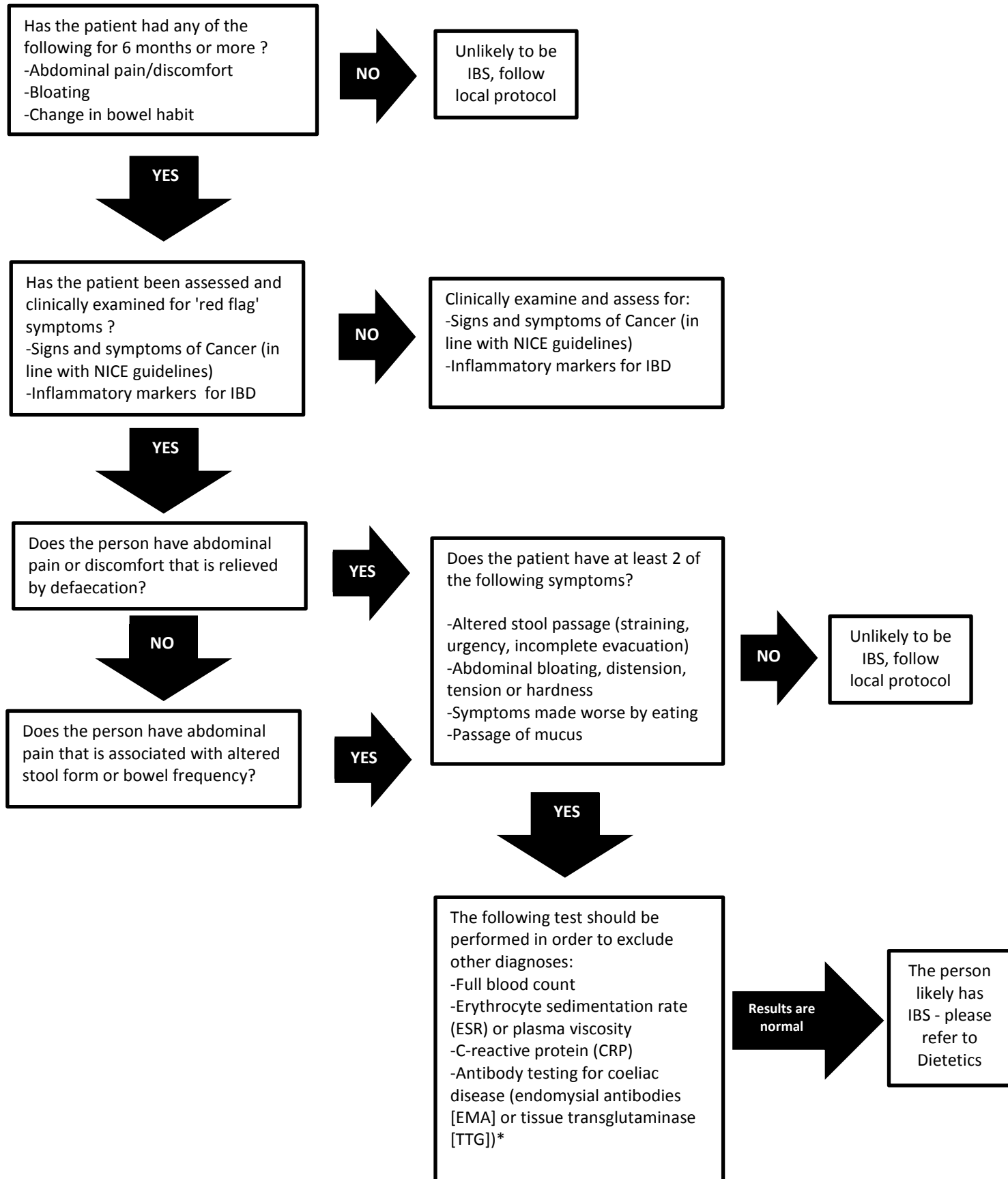


Referral Flowchart for Irritable Bowel Syndrome

Whittington Health
Nutrition and Dietetics

*** For an accurate result patient must eat some gluten in more than one meal for at least 6 weeks before test taken.** *NB. For patients who may find it difficult to tolerate gluten for a period of 6 weeks it would be ideal to co-ordinate blood test and biopsy around the same time if coeliac disease is suspected.*



*** For an accurate result patient must eat some gluten in more than one meal for at least 6 weeks before test taken. NB. For patients who may find it difficult to tolerate gluten for a period of 6 weeks it would be ideal to co-ordinate blood test and biopsy around the same time if coeliac disease is suspected.**