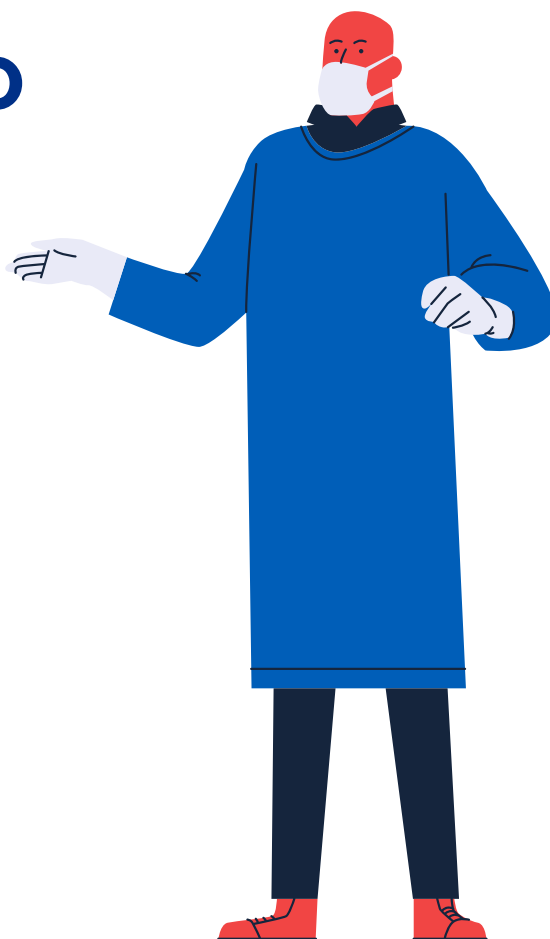
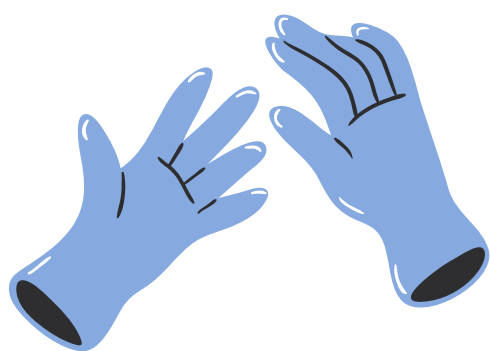


What is Personal Protective Equipment?

**A VISUAL STORY TO
EXPLAIN PPE**



What is PPE?

You might have heard about **PPE** on the **news**.

You may have seen **people wearing PPE** at home, **outside** or in **buildings**.

It means **Personal Protective Equipment**. It can be used to **keep different parts of a person safe**.

Personal

This means that it is for a **person**.

You might see **lots of people** using PPE in the hospital.

This includes **doctors, nurses** and **anyone who works in the hospital**.

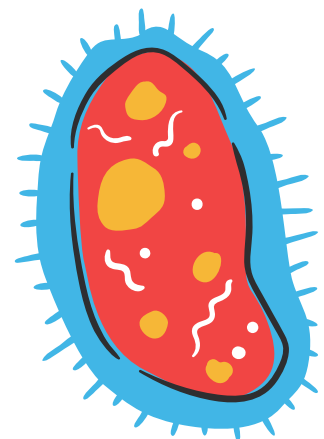


Protective

This means that it is to **keep someone safe**.

Their actions are to **keep themselves and others safe**.

They are keeping themselves safe from **germs and infection**.

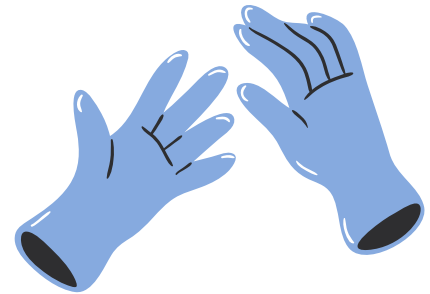


Equipment

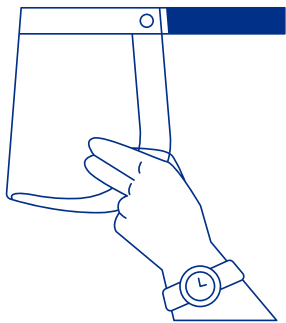
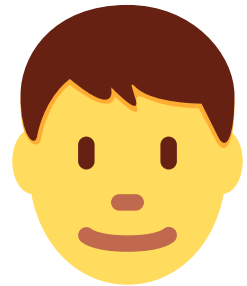
This means that it what the person is **using**.

There are lots of **different things** people are using to stay safe.

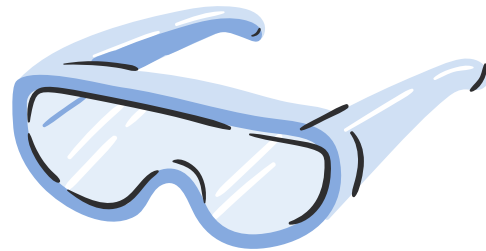
People **might wear lots** of equipment or **a few pieces**.



PPE for a face might look like:



Face shield



Eye protection

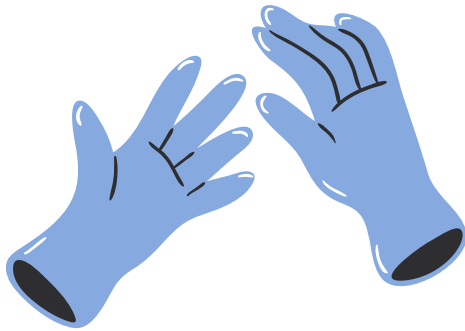


Face mask



Hair protection

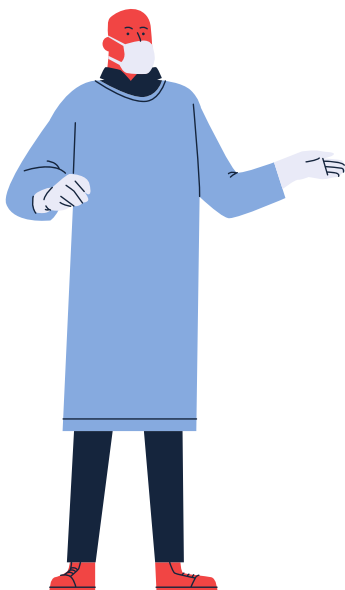
PPE for a person's body might look like:



Gloves



Shoes



Overalls



Gown

People might **wear lots** of personal protective equipment pieces or **only a few**. This is because of where they are.

What are Whittington staff wearing?

If you go to **hospital** or get **medical help** at a **GP surgery** or **health centre** you may see staff wearing personal protective equipment.

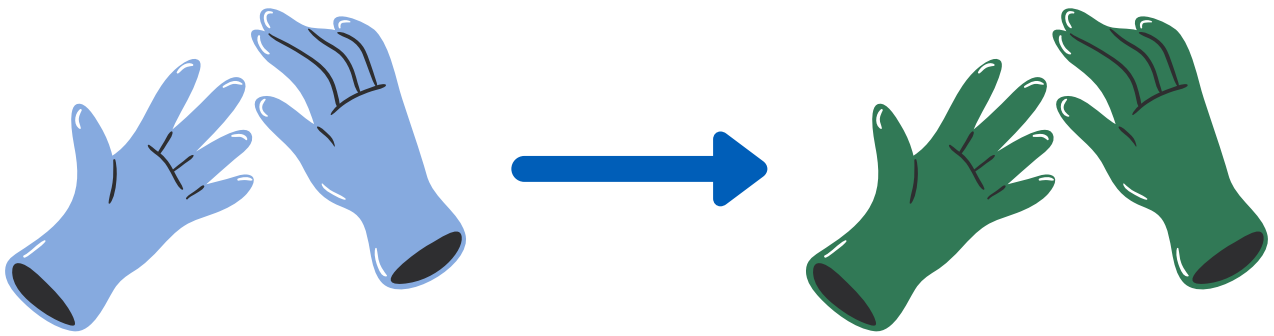
It **might look scary** as you may not be able to see all of **someone's face**.

Staff have tried to make this **less scary** for patients and visitors. Some may write their **names on their clothes** or **photos** of have their faces.



Staying clean

A lot of PPE is only meant to be **worn once**. This means that people might **change what they are wearing** when they do **different tasks**.



This is to **stop germs** from spreading.

People are **washing their hands more** and **for longer** to keep themselves clean.

You should **wash your hands** for at least **20 seconds**.

20

