

# Changes to local health and care services

What do you think?



easy  
read

# Contents

---



3

Introduction



4

What we want to do



5

Where the services would move to



8

Things we need to change now



10

Children's services



12

Adults' services



14

For more information

# Introduction



NHS Whittington Health provides health and care services in Haringey and Islington.



We want to help people live long and healthy lives.

We are thinking about making some changes to improve our services.



We would like to know what you think about the services you use or would like to use.

You can tell us what you think by filling in one of the separate Easy Read questionnaires.



This information explains our ideas for changes to our services.

# What we want to do



We provide services in lots of places in the local area.



We want to change where the services happen so that they are:

- in nice modern buildings
- easier for people to get to.



We will not change:

- the number of appointments there are
- the healthcare person you see
- the good quality of the services.

# Where the services would move to

## Children in care



**Children in Care** are looked after by the local council, not their own parents.

Our idea is to move the Children in Care Service from Bounds Green Health Centre to Tynemouth Road Health Centre.

## Child Development Centre



A **Child Development Centre** is a place that gives children support and care.

Our idea is to move services based at the Child Development Centre from St Ann's Hospital to Tynemouth Road Health Centre.

## Child Protection Medicals



**Child protection medicals** are when a doctor checks that a child is well and safe.

Our idea is to move Child Protection Medicals from St Ann's Hospital to Tynemouth Road Health Centre.

## IAPT



**IAPT** stands for Improving Access to Psychological Therapies. It helps look after people's minds by talking through issues with a health professional.

Our idea is to move IAPT from Tynemouth Road Health Centre to The Laurels Healthy Living Centre.

## Podiatry



**Podiatry** is looking after people's feet.

Our idea is to move Podiatry services from Tynemouth Road Health Centre and The Laurels Healthy Living Centre to Lordship Lane Health Centre.

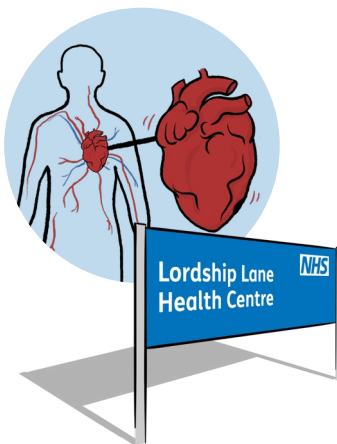
## Diabetes



**Diabetes** is a disease which causes a problem with the sugar levels in your blood.

Our idea is to move Diabetes services from The Laurels Healthy Living Centre to Lordship Lane Health Centre.

## Cardiology

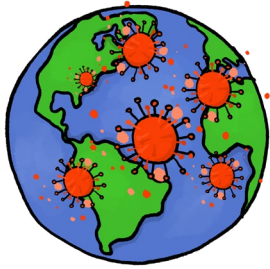


**Cardiology** is looking after people's hearts.

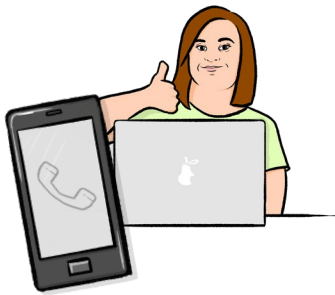
Our idea is to move Cardiology services from The Laurels Healthy Living Centre to Lordship Lane Health Centre.

# Things we need to change now

## Changing some services



COVID-19 is a new illness that is spreading around the world. It can affect your lungs and breathing. It is also called Coronavirus.



Because of COVID-19, some services have been online or by telephone instead of face-to-face.



People have said good things about services done this way, and it means we need less space to do it.



We will still be able to offer a face-to-face service when it is needed.





## Changing where the services will be

We need to decide where our services will be by the end of March 2021. This will save us money.



Local people have told us they need more services in the east of the area.



We have also been told that our buildings and the places they are in need to be better.

# Children's services



Most of our children's services happen in schools, children's centres, homes and other local places. This will not change.



However, we want to move Child Protection Medicals and the Child Development Centre from St Ann's Hospital to Tynemouth Road Health Centre.



This is because Tynemouth Road Health Centre is:

- better for children and young people
- easier to get to
- in an area where more care and support is needed

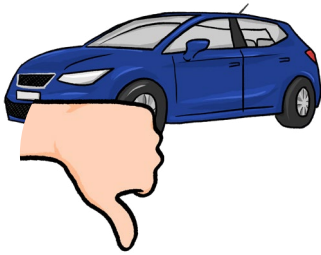




- a place where our staff can all work as a team



- owned by us so it is cheaper than renting a space (or building) at St Ann's Hospital.



Some people might think the change is a bad thing because:

- they might have to travel further to their appointments



- the air near Tynemouth Road Health Centre is not always good to breathe



- they might not want their appointments to be somewhere different.

# Adults' services



We want to move most services to Lordship Lane Health Centre.



IAPT services would move to The Laurels Healthy Living Centre.



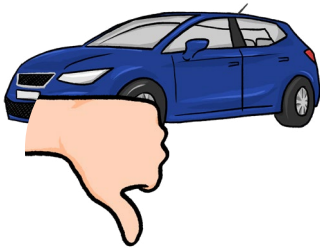
The changes would be good because:

- people could use different services in the same place
- at Lordship Lane Health Centre we will be able to work with **Connected Communities**. This is a plan that helps local people with services and to live a good life





- if we don't move the adult's services, we won't be able to move the children's ones.



Some people might think the change is a bad thing because they might have to travel further to their appointments.

# For more information

If you would like more information  
please contact us by:



Website:  
[www.whittington.nhs.uk/estates](http://www.whittington.nhs.uk/estates)



Post:  
**Communications and Engagement  
Office**  
**Jenner Building**  
**Magdala Avenue**  
**London**  
**N19 5NF**

## Patient Advice and Liaison Service (PALS)



Email:  
[whh-tr.whitthealthPALS@nhs.net](mailto:whh-tr.whitthealthPALS@nhs.net)

Phone:  
**020 7288 5551**