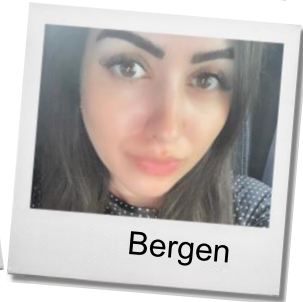


Our team:



Working hours:

Monday-Sunday 0800-2000

Contact number:

07557 202 900 or 0203 316 1950

Email:

whh-tr.hospitalathome@nhs.net

Address:

Northern Health Centre
580 Holloway Road, N7 6LB

Please note this is not an emergency service

In an emergency CALL 999 for an ambulance



Out of hours:

If you need urgent advice, please contact the hospital who referred you to our service:

Whittington Hospital I for Ward:

0207 272 5442

University College of London Hospital:

0780 385 3567-Ask for Paediatric Registrar on call

Twitter.com/WhitHealth

Facebook.com/WhittingtonHealth

Whittington Health NHS Trust

Magdala Avenue

London

N19 5NF

Phone: 020 7272 3070

www.whittington.nhs.uk

Date published: 13/03/2023

Review date: 13/03/2025

Ref: CYP/CommChildNurs/ICH@H/01

© Whittington Health

Please recycle

**Islington Children's
Hospital @ Home**



**A guide for you and your
family**





Who are we?

We are a team of specialist nurses that provide assessment, support, and advice for unwell infants, children, and young people recovering at home.

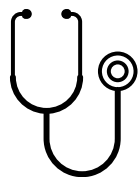
What we do:

The hospital at home nursing team support your child's recovery at home, preventing admission to hospital or allowing for early discharge from hospital.

We provide specialist paediatric nursing care in the comfort of the child's home.

Who can we look after?

0–18-year-olds with an Islington GP, referred to our service by hospital clinicians for management of an acute illness.



Useful information on conditions we care for:

www.what0-18.nhs.uk



Bronchiolitis



Diarrhoea and vomiting



Fever/ High Temperature



Jaundice



Infant Feeding



Viral Induced Wheeze



We value your feedback.

Please fill out our online friends and family questionnaire, with the QR code below, to tell us what we do well or how we can improve.



Patient advice and liaison service (PALS)

If you have a compliment, complaint or concern please contact our PALS team on 020 7288 5551 or whh-tr.PALS@nhs.net

If you need a large print, audio or translated copy of this leaflet please email: whh-tr.patient-information@nhs.net.

