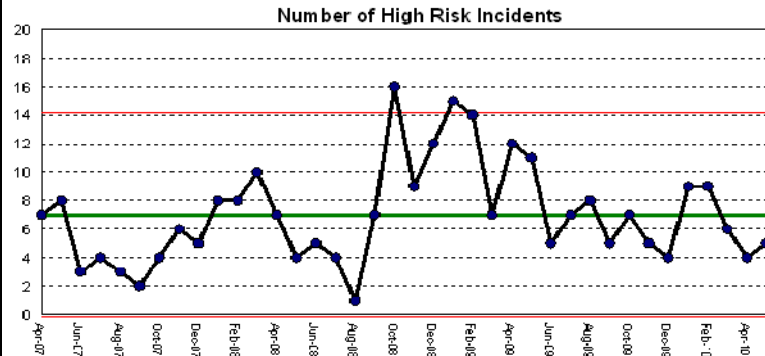


## Clinical Quality

note: refresh of Dr Fosters available for March 2010. Trust data refreshed to May 2010

### Adverse Incidents



Green: within normal SPC parameters AND benchmark is within national upper quartile

Amber: within normal SPC parameter AND benchmark is not above England

Red: lower control limit breach or run of 8 points below centre line (average)

source: pre-July 09: Safeguard, July 09 onwards: Datix

Target is to increase incident reporting to be in the top quartile of national benchmark performance

### Never Events

The Trust has had no Never Events to date this year

Source Risk Management Department

Never Events are :

Wrong site surgery

Retained instruments post surgery

Wrong route chemotherapy

Misplaced nasogastric or orogastric tube not detected prior to use

Inpatient death from post-partum haemorrhage after elective caesarean section

Intravenous administration of potassium chloride

source: NPSA

### Overall Mortality Rate

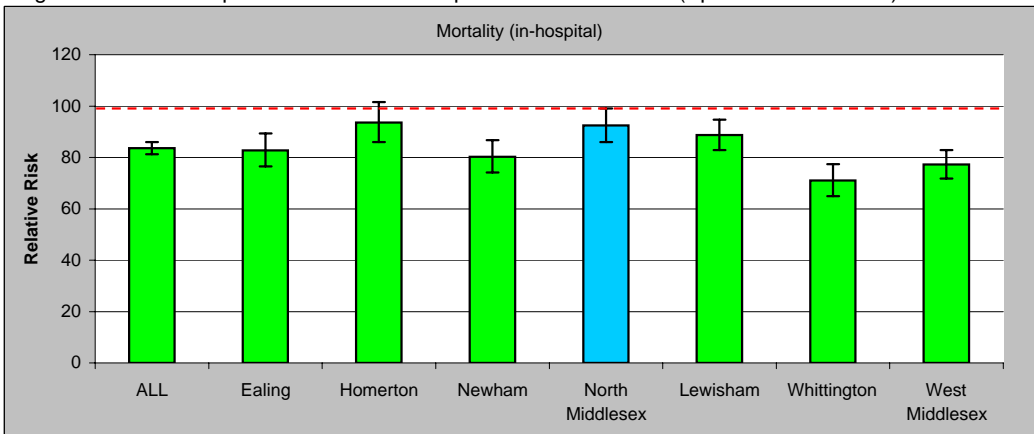
Benchmark (Dr Fosters Intelligence/NHS Choices. Standardised Mortality Rate, England)

Standardised on total England data = 100, Apr 2009 - Mar 2010)

Trust	RR	Trust	RR
University College London	64	Hillingdon	82
Royal Free Hampstead	64	Guy's and St Thomas'	83
Whittington	70	Ealing	83
Imperial College Healthcare	71	Kingston	85
St George's Healthcare	74	Lewisham	88
Epsom and St Heliers	75	King's College	88
Barnet and Chase Farm	76	Whipps Cross	90
Barts and the London	76	North Middlesex	93
North West London	77	Homerton	93
West Middlesex	77	South London Healthcare	95
Chelsea and Westminster	79	Mayday Healthcare	96
Newham	80	Barking, Havering and Redbridge	101

Target to be less than 100

Against a Peer Group of similar London hospitals - last 12 months (Apr 2009 - Mar 2010)

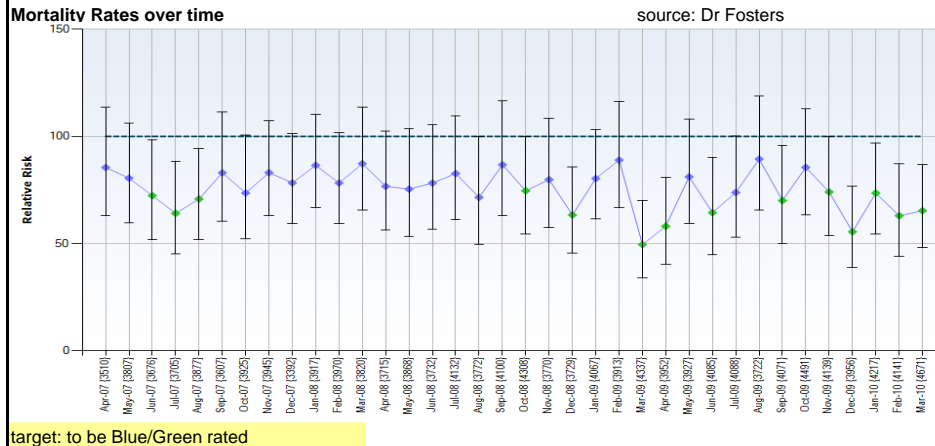


target: to be Blue/Green rated

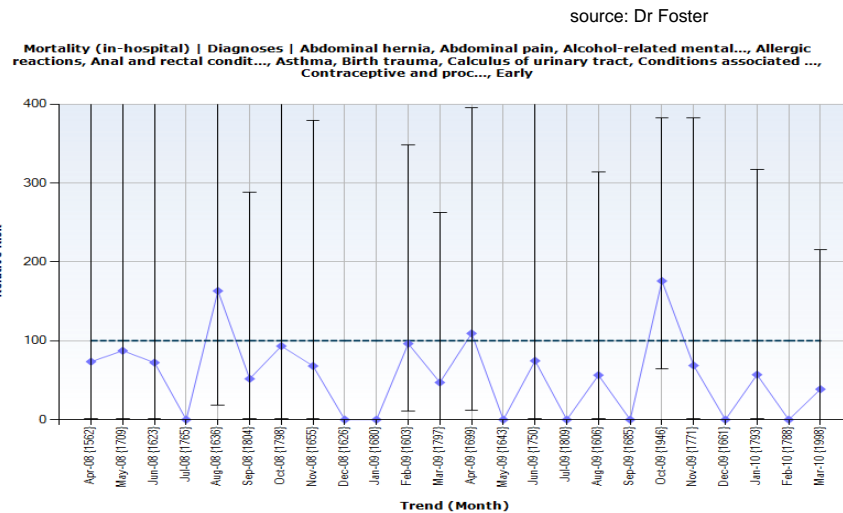
# Clinical Quality

note: refresh of Dr Fosters available for March 2010. Trust data refreshed to May 2010

## Mortality Rates (continued)



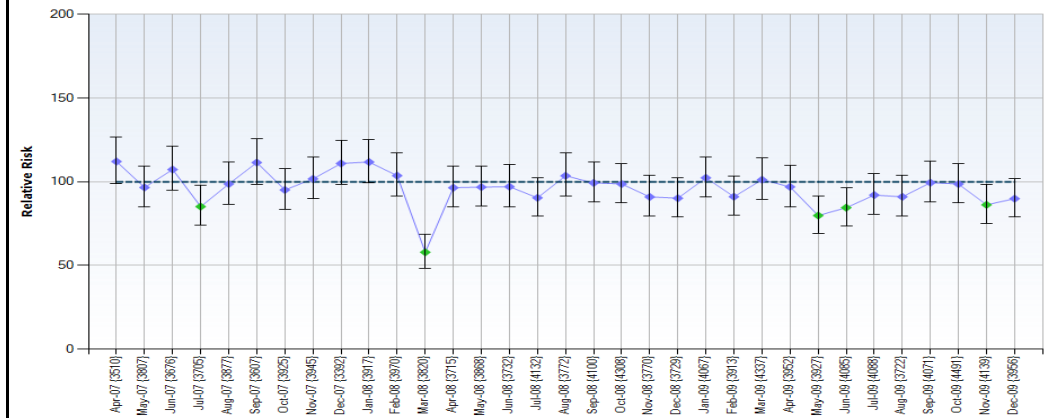
## Deaths in low risk conditions (SMR for a list of conditions with low probability of death)



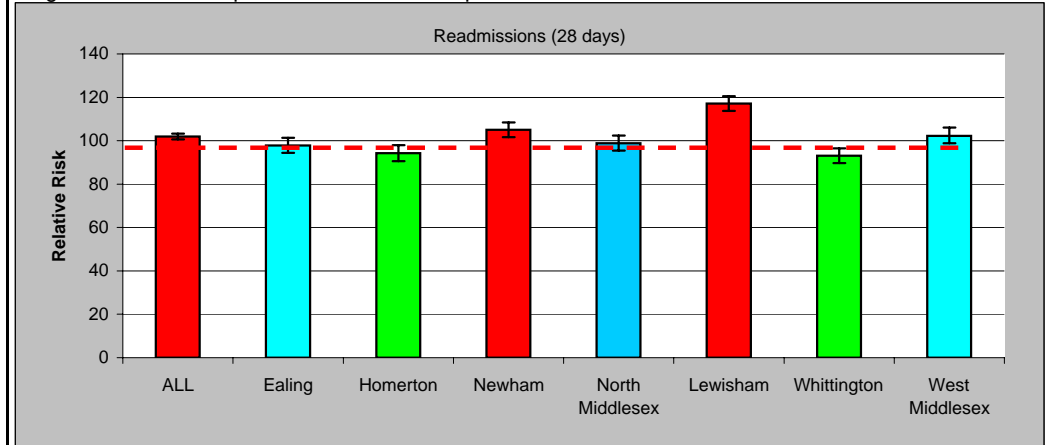
## Readmissions

source: Dr Fosters - three month lag in data

### Benchmark - trend over time



### Against a Peer Group of similar London hospitals - last 12 months



source: Dr Foster Intelligence. Relative Risk = index. Benchmark Year=2007/08

target: to be Blue/Green rated



