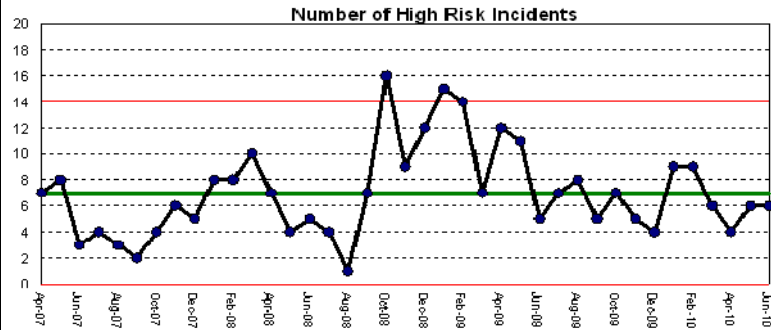


Clinical Quality

note: refresh of Dr Fosters available for March 2010. Trust data refreshed to May 2010

Adverse Incidents



Green: within normal SPC parameters AND benchmark is within national upper quartile

Amber: within normal SPC parameter AND benchmark is not above England

Red: lower control limit breach or run of 8 points below centre line (average)

source: pre-July 09: Safeguard, July 09 onwards: Datix

Target is to increase incident reporting to be in the top quartile of national benchmark performance

Never Events

The Trust has had no Never Events to date this year

Source Risk Management Department

Never Events are :

Wrong site surgery

Retained instruments post surgery

Wrong route chemotherapy

Misplaced nasogastric or orogastric tube not detected prior to use

Inpatient death from post-partum haemorrhage after elective caesarean section

Intravenous administration of potassium chloride

source: NPSA

Overall Mortality Rate

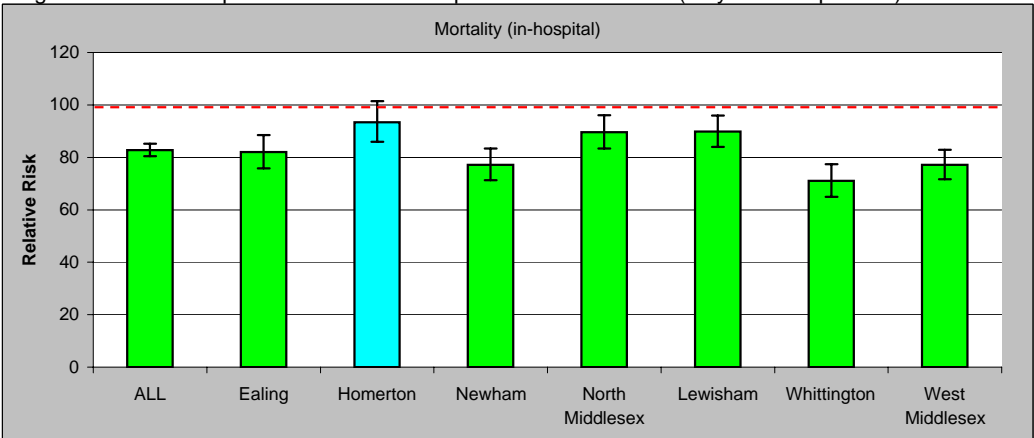
Benchmark (Dr Fosters Intelligence/NHS Choices. Standardised Mortality Rate, England)

Standardised on total England data = 100, May 2009 - Apr 2010)

Trust	RR	Trust	RR
University College London	63	Hillingdon	81
Royal Free Hampstead	63	Ealing	82
Imperial College Healthcare	69	Guy's and St Thomas'	83
Whittington	71	Kingston	83
Epsom and St Heliers	74	King's College	87
Barnet and Chase Farm	74	Lewisham	90
St George's Healthcare	74	Whipps Cross	90
Barts and the London	76	North Middlesex	90
North West London	76	Homerton	93
Newham	77	South London Healthcare	93
West Middlesex	77	Mayday Healthcare	94
Chelsea and Westminster	78	Barking, Havering and Redbridge	99

Target to be less than 100

Against a Peer Group of similar London hospitals - last 12 months (May 2009 - Apr 2010)



target: to be Blue/Green rated

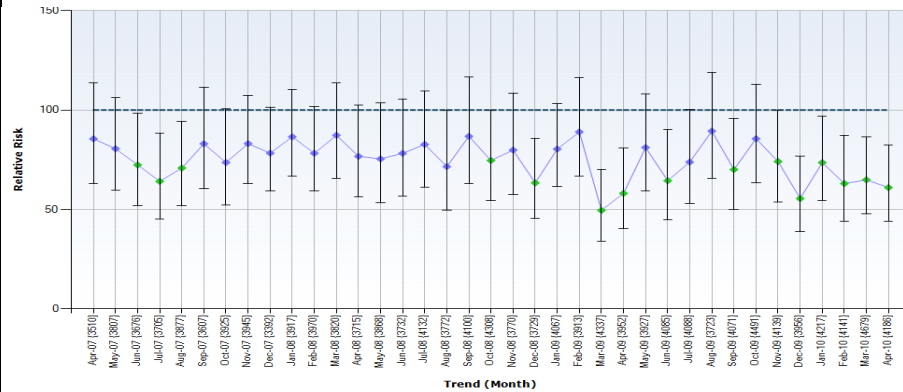
Clinical Quality

note: refresh of Dr Fosters available for March 2010. Trust data refreshed to May 2010

Mortality Rates (continued)

Mortality Rates over time

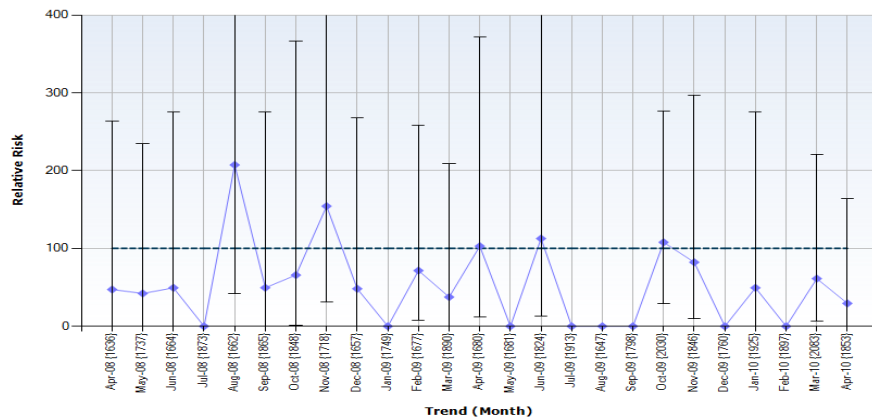
source: Dr Fosters



Deaths in low risk conditions (SMR for a list of conditions with low probability of death)

source: Dr Foster

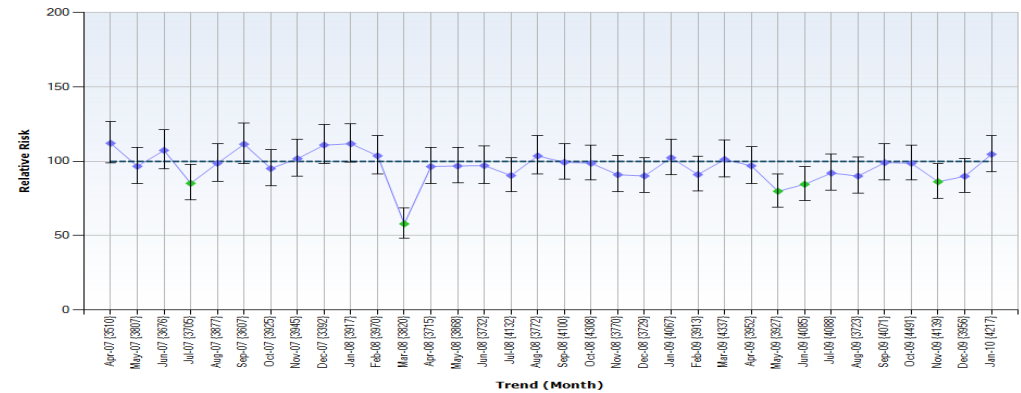
Mortality (in-hospital) | Diagnoses | Abdominal hernia, Abdominal pain, Acquired foot deformities, Alcohol-related mental..., Allergic reactions, Anal and rectal condit..., Appendicitis and other..., Asthma, Birth trauma, Calculus of urinary tract, Condit



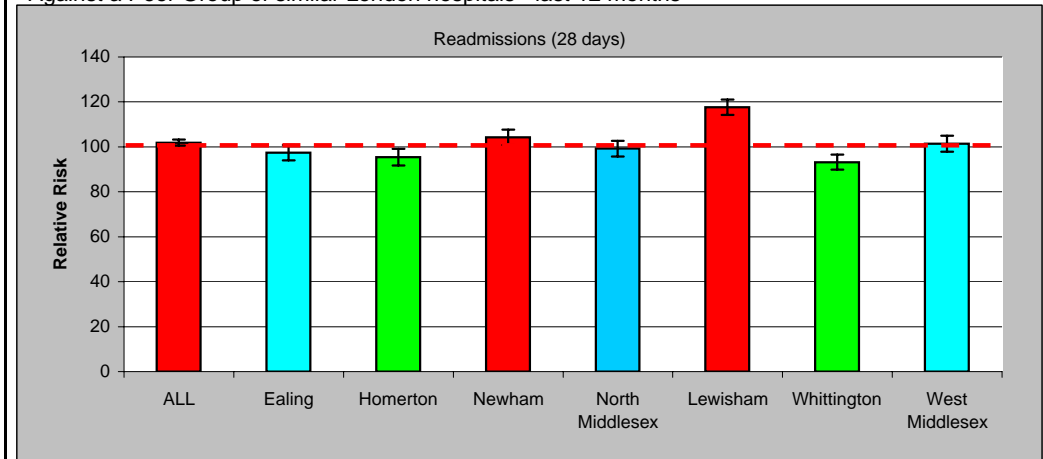
Readmissions

source: Dr Fosters - three month lag in data

Benchmark - trend over time
Standardised against national data



Against a Peer Group of similar London hospitals - last 12 months



source: Dr Foster Intelligence. Relative Risk = index. Benchmark Year=2007/08

target: to be Blue/Green rated

